 Project Boundary

NW 186TH ST

NW 107TH AVE

FLORIDA TPKE EXT

I 75 RAMP

NW 190TH ST

NW 189TH ST

NW 187TH ST

NW 84TH CT

NW 185TH ST

NW 181ST ST

NW 178TH ST

NW 176TH LN

NW 174TH ST

NW 171ST LN

NW 170TH ST

NW 169TH TER

NW 168TH ST

NW 166TH TER

NW 166TH TER

NW 164TH ST

NW 165TH ST

NW 163RD TER

NW 162ND ST

NW 107TH AVE

NW 102ND AVE



NW 97TH AVE

NW 154TH ST

NW 153RD TER

NW 83RD PL

FLORIDA TPKE RAMP

NW 112TH AVE

NW 146TH ST

NW 143RD ST

NW 142ND ST

NW 138TH ST

SR 924

I 75 RAMP

NW 92ND AVE

DUNDEE TER

GLENCAIRN RD

ARDOCH PL

NW 140TH ST

NW 138TH ST

W OKEECHOBEE RIVER

NW 118TH AVE

NW 146TH ST

NW 134TH ST

NW 133RD ST

NW 135TH ST

W 84TH ST

W 80TH ST

W 78TH PL

W 81ST ST

W 79TH ST

Hialeah Church of Christ

MIAMI-DADE COUNTY, FLORIDA



RS Environmental Consulting Inc.  
P.O. Box 161158  
Miami FL, 33116  
Phone: 305-383-3404  
[www.rs-env.com](http://www.rs-env.com)

2014 Aerial

Vicinity Map  
T-52S, R-40E, S-17

DRAWN BY: LVK

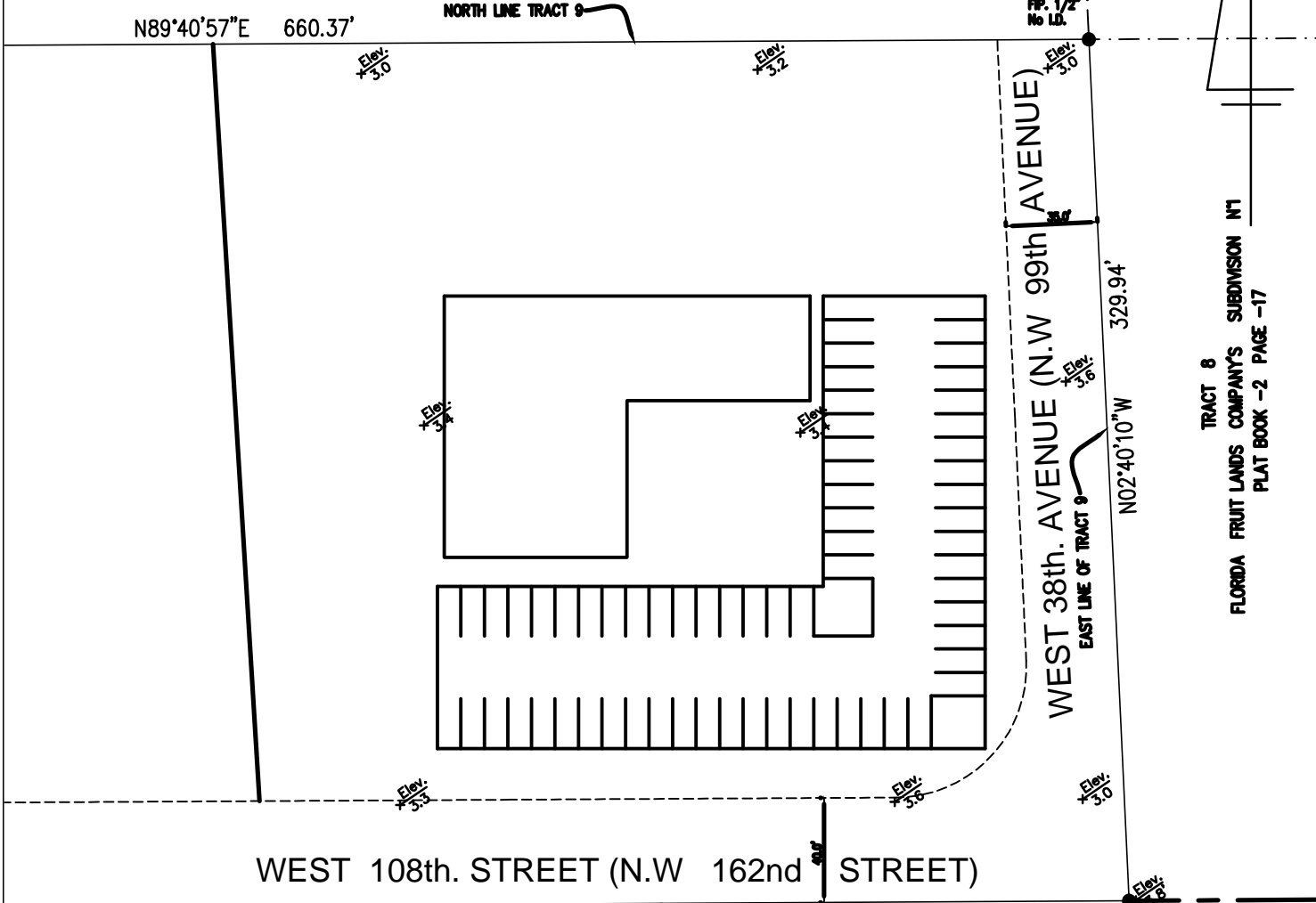
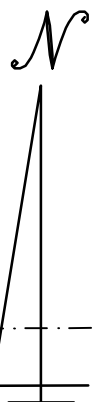
DATE: 3-8-2017

CHECKED BY: RWS

SCALE: NTS

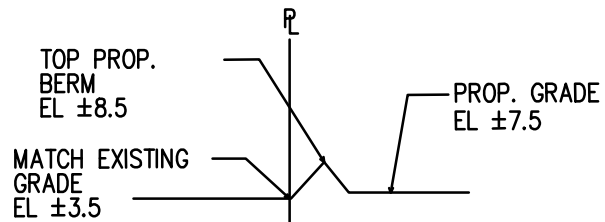
HIALEAH CHURCH OF CHRIST  
E 1/2 E 1/2 TRACT 9

TRACT 10  
LANDS COMPANY'S SUBDIVISION N°1  
AT BOOK -2 PAGE -17



TRACT 8  
FLORIDA FRUIT LANDS COMPANY'S SUBDIVISION N°1  
PLAT BOOK -2 PAGE -17

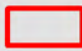
660.32' SOUTH LINE TRACT 9 & SOUTH LINE OF N.E. 1/4 OF SECTION 17-52-40  
Elev. 3.8

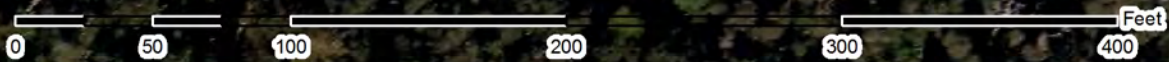


SHEET 1 OF 1

PREPARED BY:  
**AYLWARD ENGINEERING & SURVEYING, INC.**  
3222 Ridge Trace  
Davie, Florida 33328  
954-424-5852 or 305-827-2216  
EB/LB No. 5183  
DATE: 8/31/2016, REVISED: 9/7/2016  
PROJECT NO. 14-135

SHARON AYLWARD COX, P.E. 43906  
STATE OF FLORIDA

 Project Boundary



**Hialeah Church of Christ**  
MIAMI-DADE COUNTY, FLORIDA



RS Environmental  
Consulting Inc.  
P.O. Box 161158  
Miami FL, 33116  
Phone: 305-383-3404  
[www.rs-env.com](http://www.rs-env.com)

2014 Aerial

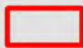
**Location Map**  
T-52S, R-40E, S-17

DRAWN BY: LVK

DATE: 3-8-2017

CHECKED BY: RWS

SCALE: NTS

 Project Boundary

Dania muck, depressional

Lauderhill muck-drepressional

0 287.5 575 1,150 1,725 2,300 Feet

Hialeah Church of Christ  
MIAMI-DADE COUNTY, FLORIDA



RS Environmental  
Consulting Inc.  
P.O. Box 161158  
Miami FL, 33116  
Phone: 305-383-3404  
[www.rs-env.com](http://www.rs-env.com)

2014 Aerial

**Soils Map**  
T-52S, R-40E, S-17

DRAWN BY: LVK

DATE: 3-8-2017

CHECKED BY: RWS

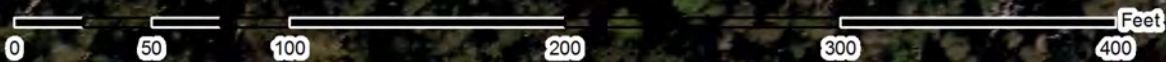
SCALE: NTS



Project Boundary



WL1 - Freshwater Wetland



**Hialeah Church of Christ**

**MIAMI-DADE COUNTY, FLORIDA**



RS Environmental Consulting Inc.  
P.O. Box 161158  
Miami FL, 33116  
Phone: 305-383-3404  
[www.rs-env.com](http://www.rs-env.com)

2014 Aerial

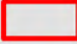

**Veg Map**  
**T-52S, R-40E, S-17**

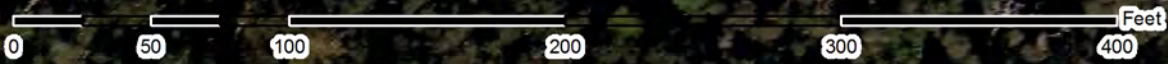
DRAWN BY: LVK

DATE: 3-8-2017

CHECKED BY: RWS

SCALE: NTS

-  Project Boundary
-  30' Secondary Impacts



**Hialeah Church of Christ**  
**MIAMI-DADE COUNTY, FLORIDA**



RS Environmental Consulting Inc.  
 P.O. Box 161158  
 Miami FL, 33116  
 Phone: 305-383-3404  
[www.rs-env.com](http://www.rs-env.com)

2014 Aerial

**Secondary Impacts Map**  
**T-52S, R-40E, S-17**

<b>DRAWN BY: LVK</b>	<b>DATE: 3-8-2017</b>
<b>CHECKED BY: RWS</b>	<b>SCALE: NTS</b>